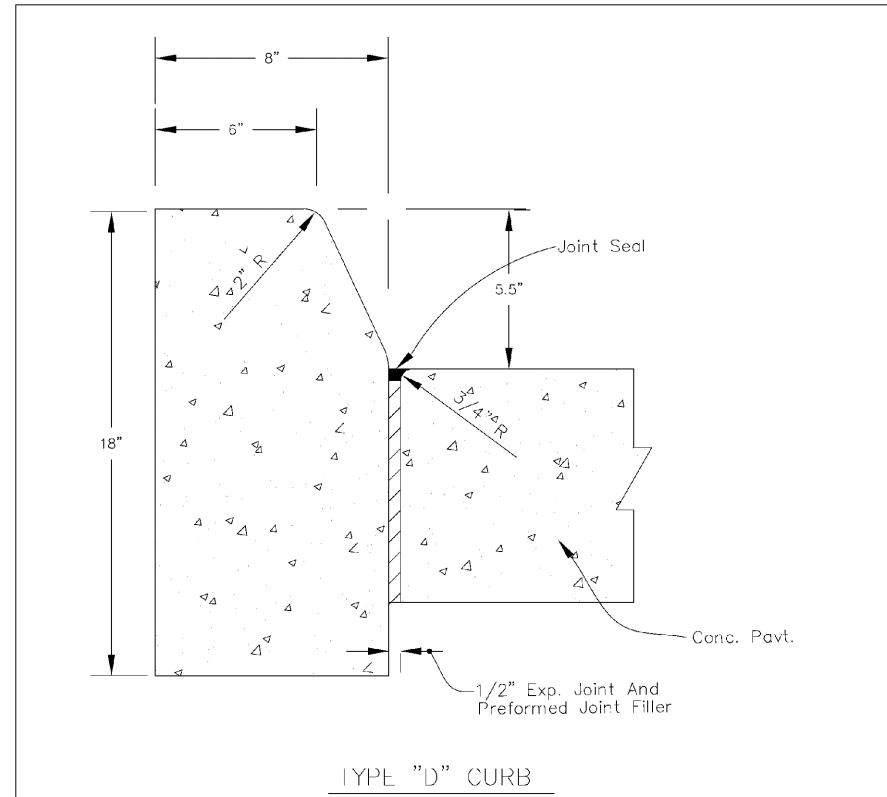
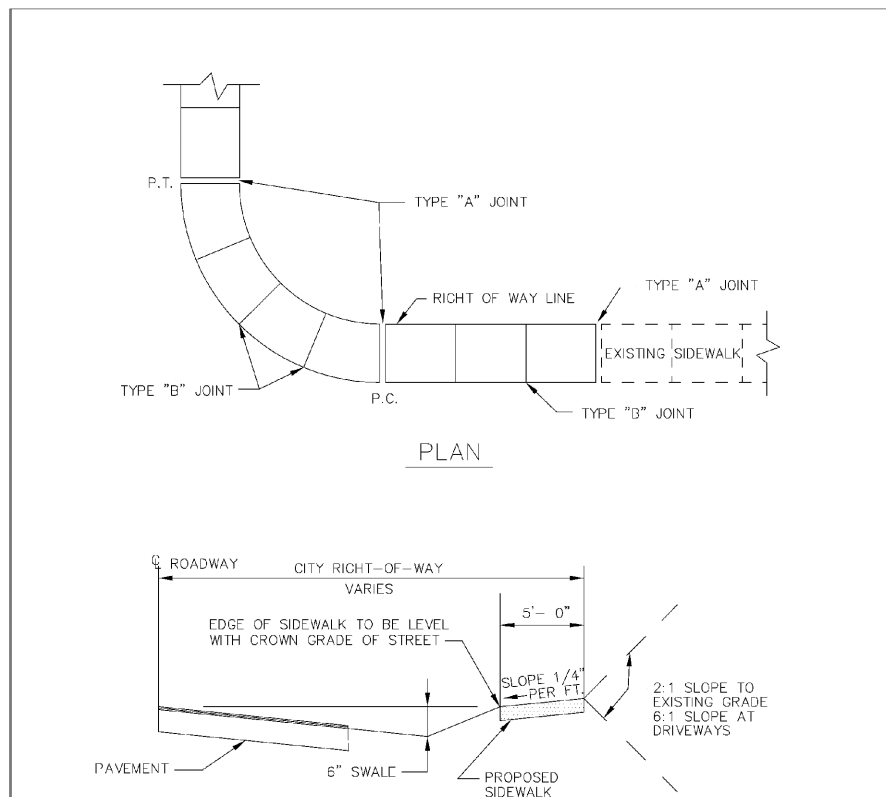


J:\CAD\23-16\CAD_Files\23-16_DETAILS.dwg - 10/7/2024 10:57 AM



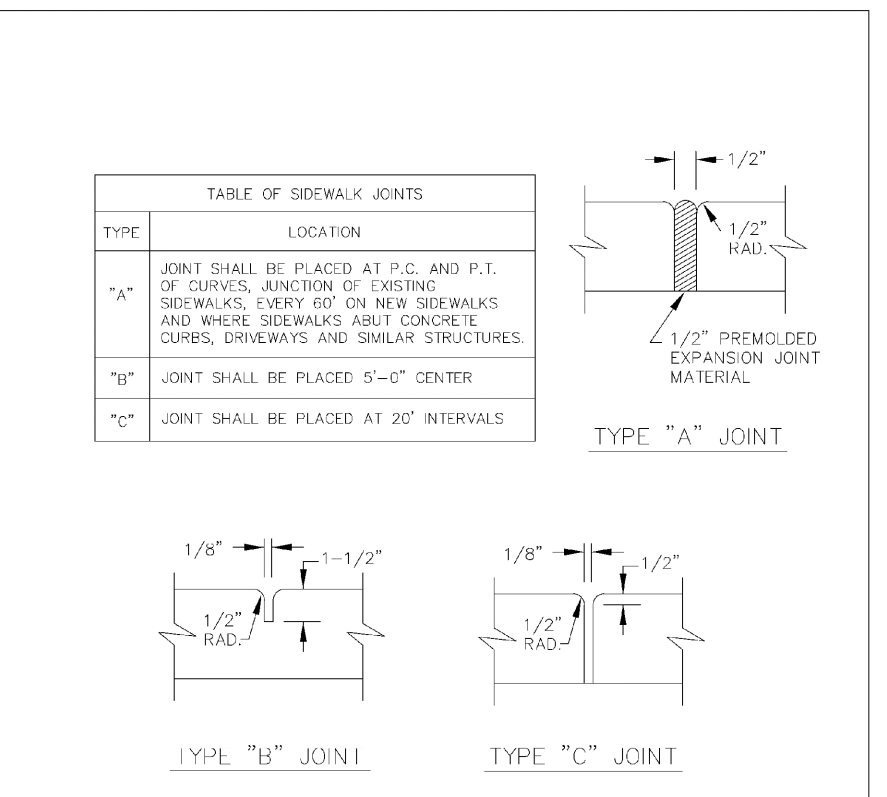
CONCRETE CURB DETAIL

| ENGINEERING STANDARDS 2022 | | | |
|----------------------------|----|---------|--|
| REVISIONS | BY | DATE | DESCRIPTION |
| 1 | HS | 01-2024 | ENGINEERING DIVISION CITY OF POMPANO BEACH |
| 2 | HS | 08-2024 | SCALE: N.T.S. |
| 3 | HS | 01-2025 | DATE: MAY 2022 DWG. NO. 300-2 |



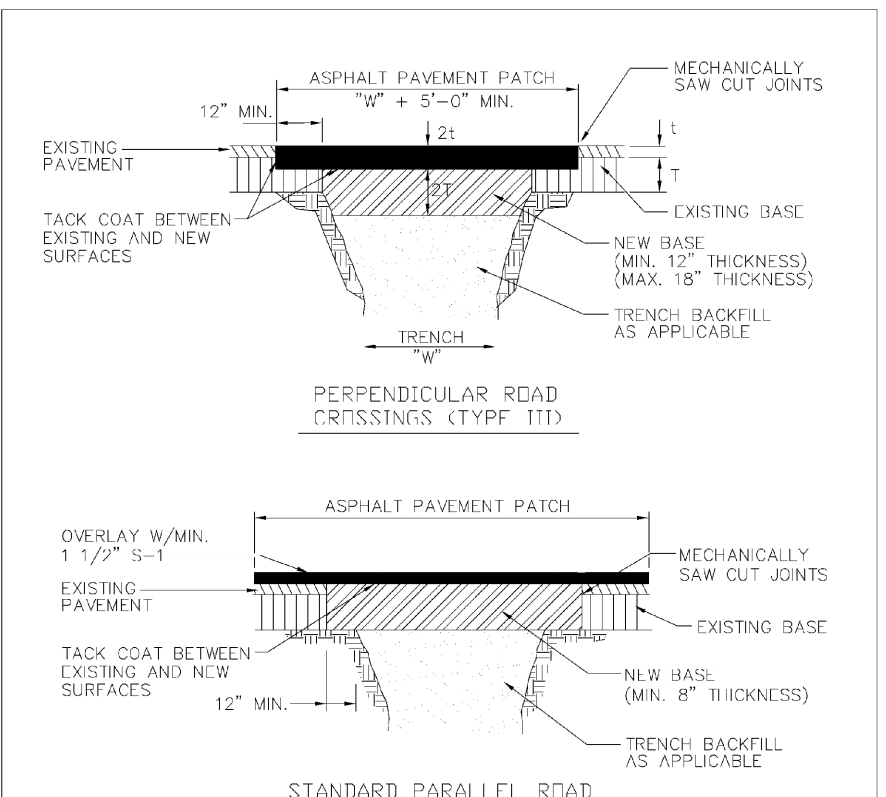
SIDEWALK DETAILS

| ENGINEERING STANDARDS 2022 | | | |
|----------------------------|----|---------|--|
| REVISIONS | BY | DATE | DESCRIPTION |
| 1 | HS | 01-2024 | ENGINEERING DIVISION CITY OF POMPANO BEACH |
| 2 | HS | 08-2024 | SCALE: N.T.S. |
| 3 | HS | 01-2025 | DATE: JUNE 2022 DWG. NO. 301-1 |



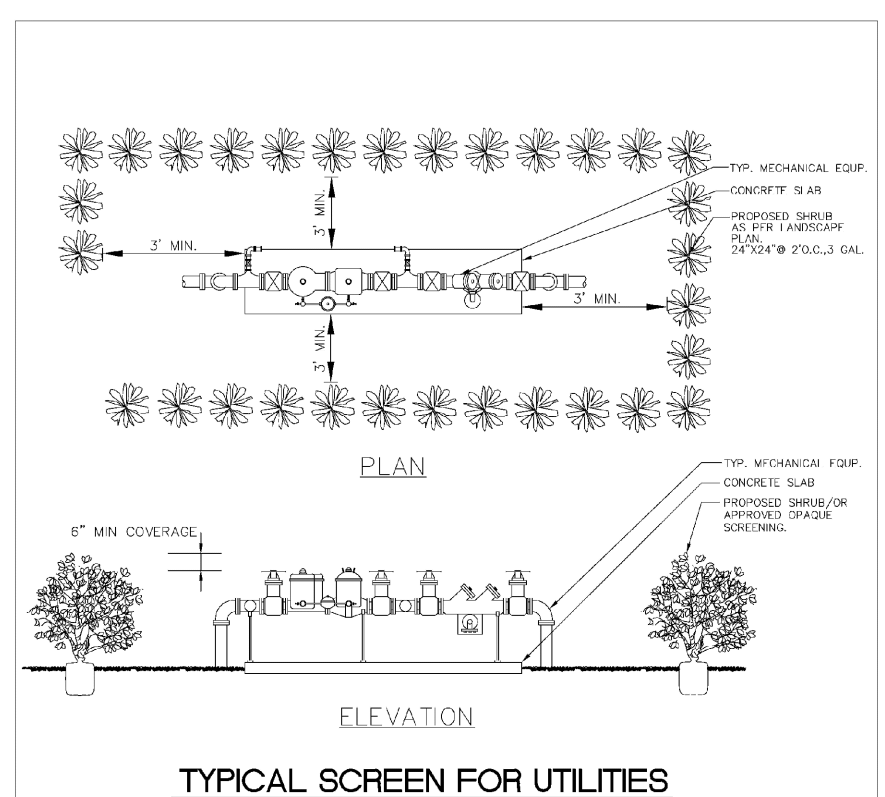
SIDEWALK DETAILS

| ENGINEERING STANDARDS 2022 | | | |
|----------------------------|----|---------|--|
| REVISIONS | BY | DATE | DESCRIPTION |
| 1 | HS | 01-2024 | ENGINEERING DIVISION CITY OF POMPANO BEACH |
| 2 | HS | 08-2024 | SCALE: N.T.S. |
| 3 | HS | 01-2025 | DATE: JUNE 2022 DWG. NO. 301-2 |



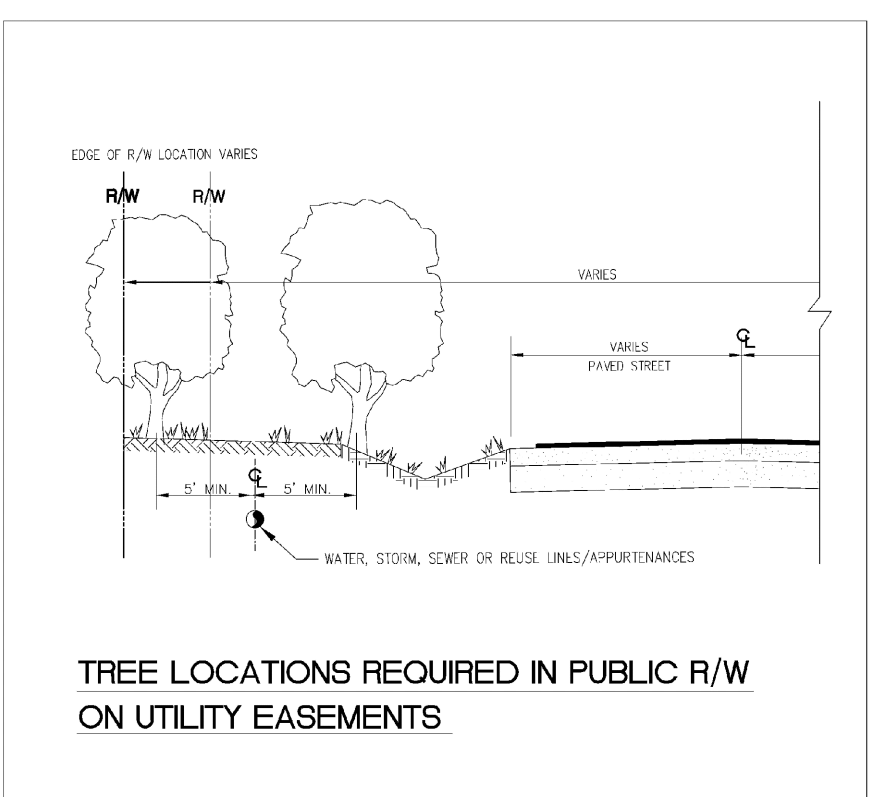
SURFACE RESTORATION

| ENGINEERING STANDARDS 2022 | | | |
|----------------------------|----|---------|--|
| REVISIONS | BY | DATE | DESCRIPTION |
| 1 | HS | 01-2024 | ENGINEERING DIVISION CITY OF POMPANO BEACH |
| 2 | HS | 08-2024 | SCALE: N.T.S. |
| 3 | HS | 01-2025 | DATE: MAY 2022 DWG. NO. 306-2 |



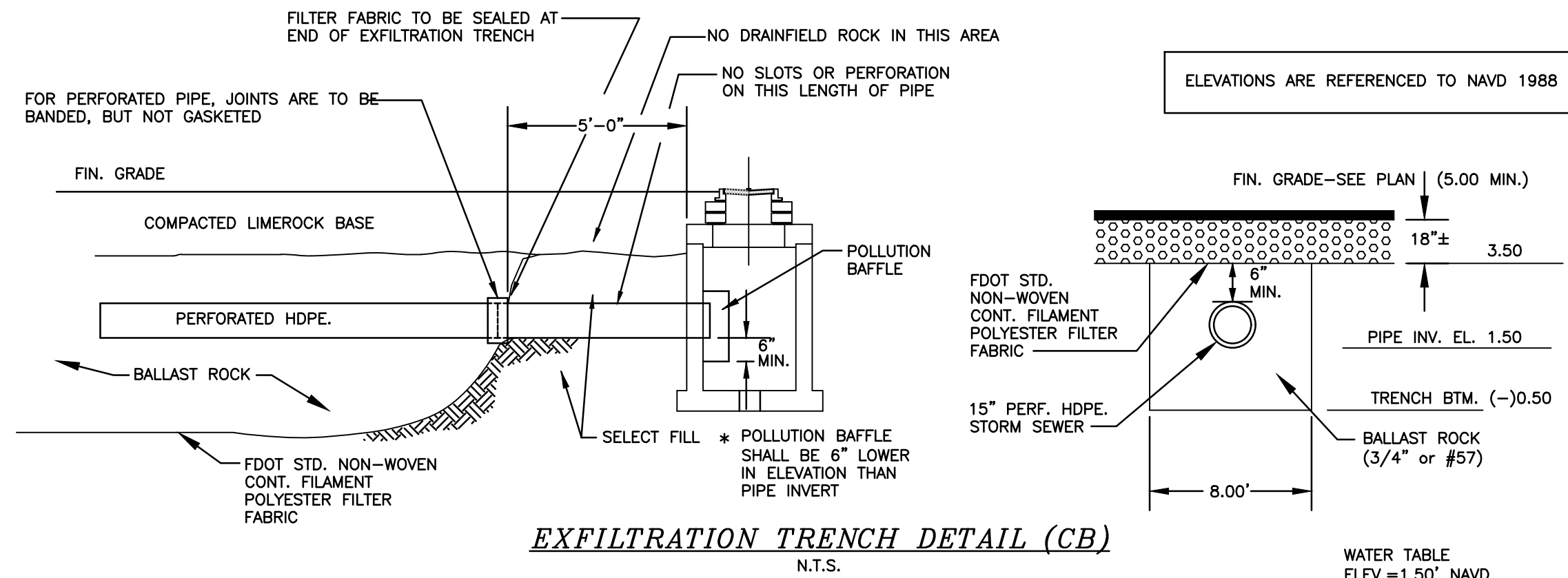
TYPICAL SCREEN FOR UTILITIES

| ENGINEERING STANDARDS 2022 | | | |
|----------------------------|----|---------|--|
| REVISIONS | BY | DATE | DESCRIPTION |
| 1 | HS | 01-2024 | ENGINEERING DIVISION CITY OF POMPANO BEACH |
| 2 | HS | 08-2024 | SCALE: N.T.S. |
| 3 | HS | 01-2025 | DATE: MAY 2022 DWG. NO. 315-1 |



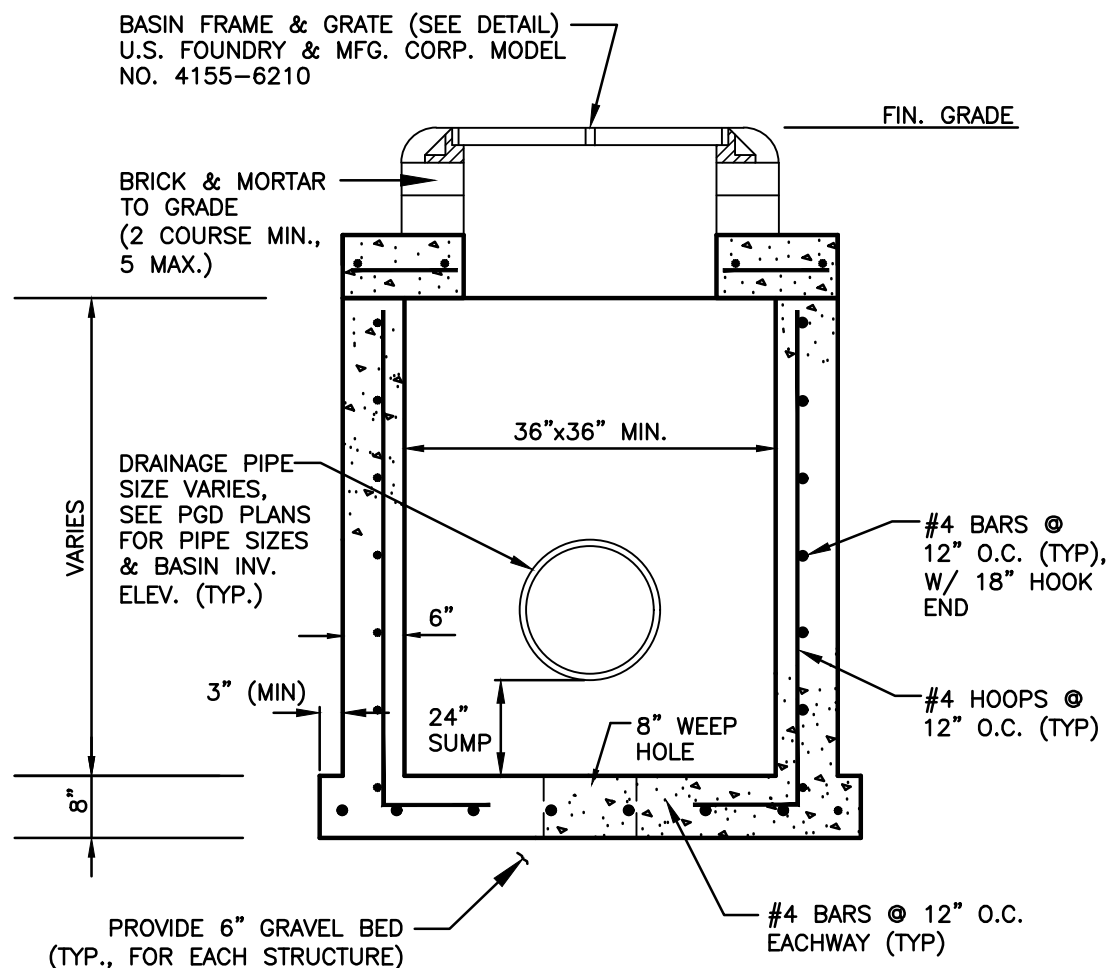
TREE LOCATIONS REQUIRED IN PUBLIC R/W ON UTILITY EASEMENTS

| ENGINEERING STANDARDS 2022 | | | |
|----------------------------|----|---------|--|
| REVISIONS | BY | DATE | DESCRIPTION |
| 1 | HS | 01-2024 | ENGINEERING DIVISION CITY OF POMPANO BEACH |
| 2 | HS | 08-2024 | SCALE: N.T.S. |
| 3 | HS | 01-2025 | DATE: MAY 2022 DWG. NO. 316-1 |



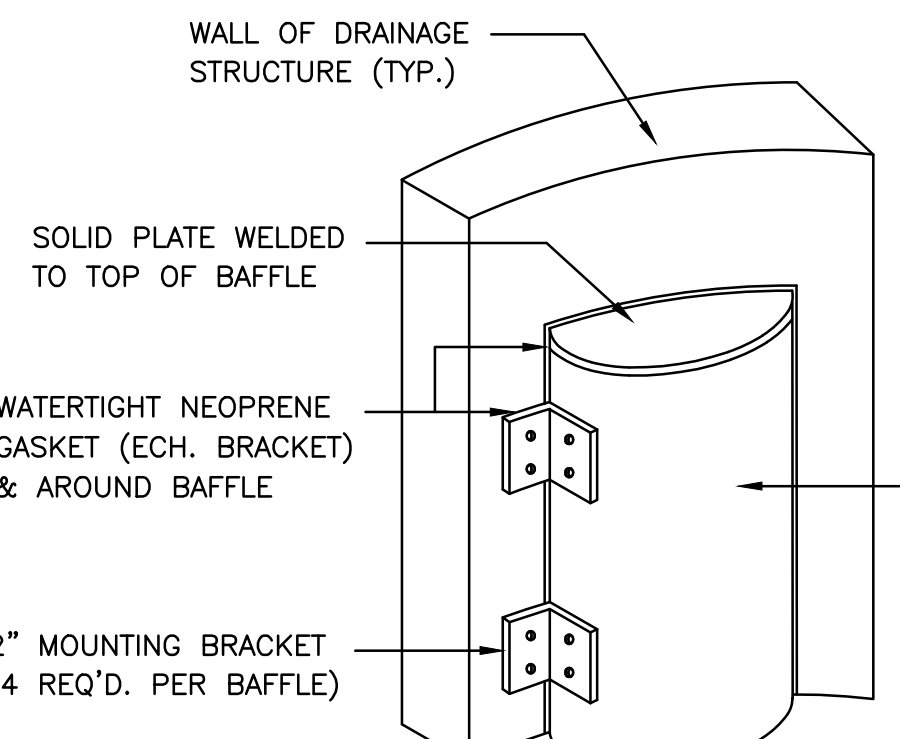
EXFILTRATION TRENCH DETAIL (CB)

| ENGINEERING STANDARDS 2022 | | | |
|----------------------------|----|---------|--|
| REVISIONS | BY | DATE | DESCRIPTION |
| 1 | HS | 01-2024 | ENGINEERING DIVISION CITY OF POMPANO BEACH |
| 2 | HS | 08-2024 | SCALE: N.T.S. |
| 3 | HS | 01-2025 | DATE: JUNE 2022 DWG. NO. 301-1 |



TYPICAL CATCH BASIN

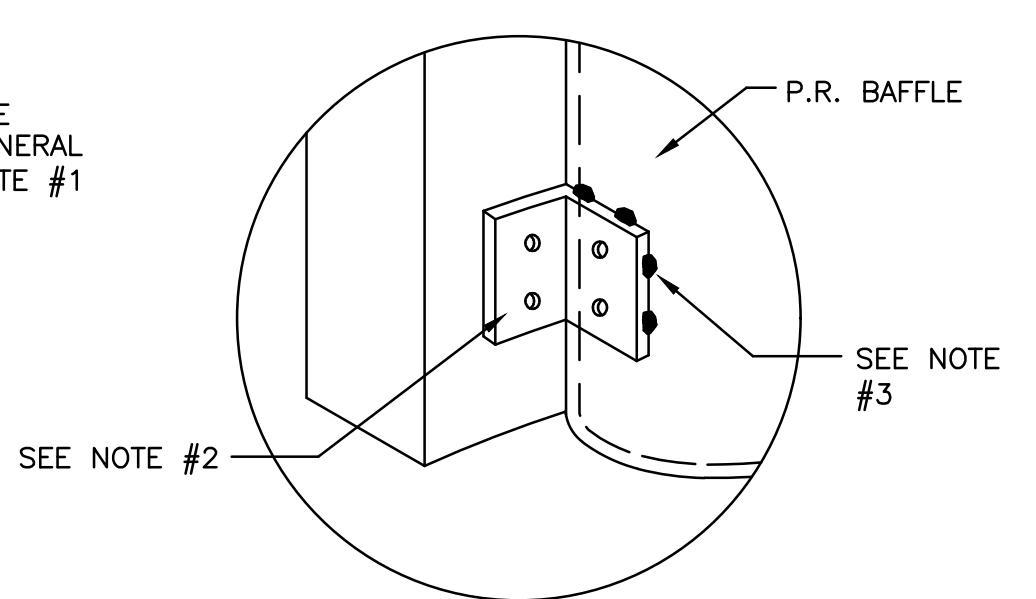
| ENGINEERING STANDARDS 2022 | | | |
|----------------------------|----|---------|--|
| REVISIONS | BY | DATE | DESCRIPTION |
| 1 | HS | 01-2024 | ENGINEERING DIVISION CITY OF POMPANO BEACH |
| 2 | HS | 08-2024 | SCALE: N.T.S. |
| 3 | HS | 01-2025 | DATE: JUNE 2022 DWG. NO. 301-1 |



BAFFLE DETAIL

| ENGINEERING STANDARDS 2022 | | | |
|----------------------------|----|---------|--|
| REVISIONS | BY | DATE | DESCRIPTION |
| 1 | HS | 01-2024 | ENGINEERING DIVISION CITY OF POMPANO BEACH |
| 2 | HS | 08-2024 | SCALE: N.T.S. |
| 3 | HS | 01-2025 | DATE: JUNE 2022 DWG. NO. 301-1 |

- GENERAL NOTES:**
1. BAFFLE TO BE SECTION OF CMP CUT IN HALF, CMP PIPE FOR BAFFLE SHALL BE THE NEXT LARGER PIPE SIZE THAN DISCHARGE LINE.
 2. 1/2" GALV. LAG BOLT IN LEAD SHIELD (TYP.).
 3. GRATING SHALL BE OFFSET IF STRUCTURE IS USED AS OVERFLOW
 4. SOLID PLATE TO BE WELDED TO TOP OF BAFFLE SECTION

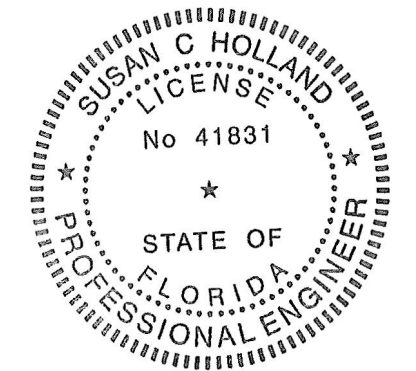


BRACKET DETAIL

| ENGINEERING STANDARDS 2022 | | | |
|----------------------------|----|---------|--|
| REVISIONS | BY | DATE | DESCRIPTION |
| 1 | HS | 01-2024 | ENGINEERING DIVISION CITY OF POMPANO BEACH |
| 2 | HS | 08-2024 | SCALE: N.T.S. |
| 3 | HS | 01-2025 | DATE: JUNE 2022 DWG. NO. 301-1 |

POLLUTION RETARDANT BAFFLE DETAIL

N.T.S.



This item has been digitally signed & sealed by Susan C. Holland, P.E. Printed copies of this document are not considered signed and sealed and the signature must be verified on any electronic copies.

AAC

PZ23-12000045

12/16/2024

| FINAL APPROVAL | | | |
|----------------|--------|-------------|----------|
| SCALE: | N.T.S. | DATE: | 02/29/24 |
| DESIGNED BY: | HS | CHECKED BY: | SCH |
| DRAWN BY: | HS | FIELD BOOK: | N/A |

| ENGINEERING STANDARDS 2022 | | | |
|----------------------------|----|---------|--|
| REVISIONS | BY | DATE | DESCRIPTION |
| 1 | HS | 01-2024 | ENGINEERING DIVISION CITY OF POMPANO BEACH |
| 2 | HS | 08-2024 | SCALE: N.T.S. |
| 3 | HS | 01-2025 | DATE: MAY 2022 DWG. NO. 316-1 |

| ENGINEERING STANDARDS 2022 | | | |
|----------------------------|----|---------|--|
| REVISIONS | BY | DATE | DESCRIPTION |
| 1 | HS | 01-2024 | ENGINEERING DIVISION CITY OF POMPANO BEACH |
| 2 | HS | 08-2024 | SCALE: N.T.S. |
| 3 | HS | 01-2025 | DATE: MAY 2022 DWG. NO. 316-1 |

| ENGINEERING STANDARDS 2022 | | | |
|----------------------------|----|---------|--|
| REVISIONS | BY | DATE | DESCRIPTION |
| 1 | HS | 01-2024 | ENGINEERING DIVISION CITY OF POMPANO BEACH |
| 2 | HS | 08-2024 | SCALE: N.T.S. |
| 3 | HS | 01-2025 | DATE: MAY 2022 DWG. NO. 316-1 |

| ENGINEERING STANDARDS 2022 | | | |
|----------------------------|----|---------|--|
| REVISIONS | BY | DATE | DESCRIPTION |
| 1 | HS | 01-2024 | ENGINEERING DIVISION CITY OF POMPANO BEACH |
| 2 | HS | 08-2024 | SCALE: N.T.S. |
| 3 | HS | 01-2025 | DATE: MAY 2022 DWG. NO. 316-1 |

| ENGINEERING STANDARDS 2022 | | | |
|----------------------------|----|---------|--|
| REVISIONS | BY | DATE | DESCRIPTION |
| 1 | HS | 01-2024 | ENGINEERING DIVISION CITY OF POMPANO BEACH |
| 2 | HS | 08-2024 | SCALE: N.T.S. |
| 3 | HS | 01-2025 | DATE: MAY 2022 DWG. NO. 316-1 |

| ENGINEERING STANDARDS 2022 | | | |
|----------------------------|----|---------|--|
| REVISIONS | BY | DATE | DESCRIPTION |
| 1 | HS | 01-2024 | ENGINEERING DIVISION CITY OF POMPANO BEACH |
| 2 | HS | 08-2024 | SCALE: N.T.S. |
| 3 | HS | 01-2025 | DATE: MAY 2022 DWG. NO. 316-1 |

| ENGINEERING STANDARDS 2022 | | | |
|----------------------------|----|---------|--|
| REVISIONS | BY | DATE | DESCRIPTION |
| 1 | HS | 01-2024 | ENGINEERING DIVISION CITY OF POMPANO BEACH |
| 2 | HS | 08-2024 | SCALE: N.T.S. |
| 3 | HS | 01-2025 | DATE: MAY 2022 DWG. NO. 316-1 |

| ENGINEERING STANDARDS 2022 | | | |
|----------------------------|----|---------|--|
| REVISIONS | BY | DATE | DESCRIPTION |
| 1 | HS | 01-2024 | ENGINEERING DIVISION CITY OF POMPANO BEACH |
| 2 | HS | 08-2024 | SCALE: N.T.S. |
| 3 | HS | 01-2025 | DATE: MAY 2022 DWG. NO. 316-1 |